

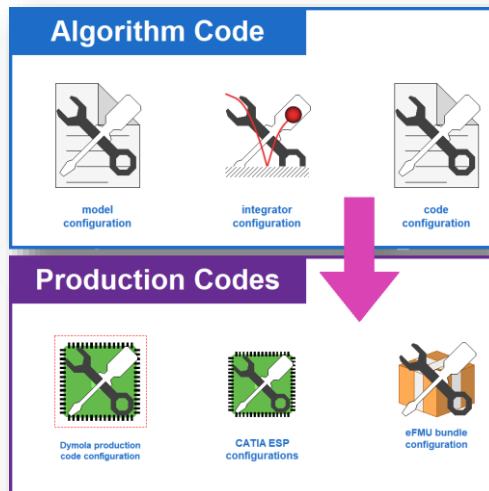


3DEXPERIENCE®

DYMOLA 2023

May 13, 2022

 DASSAULT SYSTEMES | The 3DEXPERIENCE® Company



EXECUTIVE SUMMARY

Model editing

- Search records (e.g. medium model)
- Model meta data attributes

Simulation

- Improved user interface for steady-state solver
- Simulation timers to analyze model performance

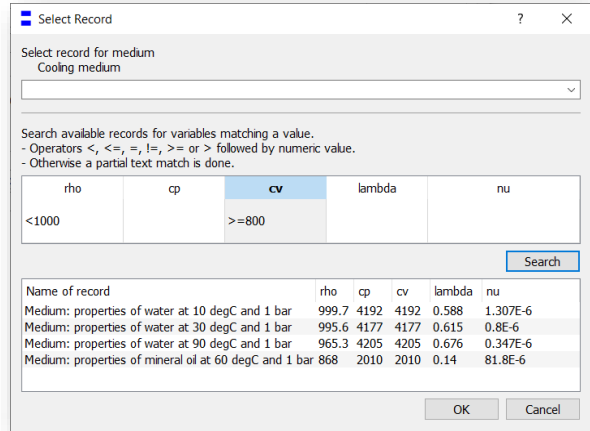
Model export

- eFMI support is now available in Dymola
- System Structure and Parameterization (SSP) export of models

SEARCH RECORDS USING GUI

New user interface to search records

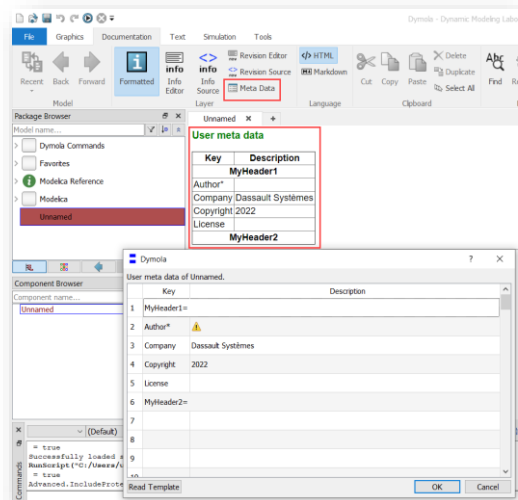
- Easily enter search criteria by double clicking on criteria boxes
- Enter values using specified operators
- User can select the wanted record from the list



3

MODEL METADATA SUPPORT

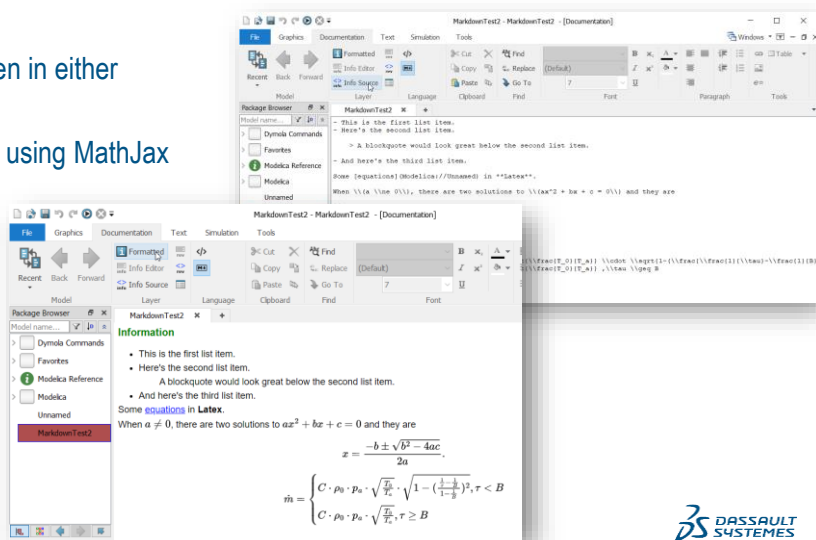
- Model metadata, in the form of key/value pairs, can be stored in models
- The metadata is stored as an annotation in the model, and is automatically displayed in the documentation layer, if present



4

DOCUMENTATION USING MARKDOWN AND MATHJAX

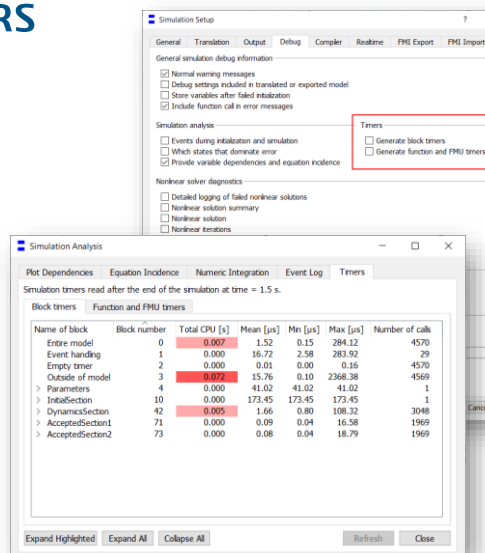
- Documentation can be written in either HTML or MarkDown (new)
- Equations can be described using MathJax to improve formatting



BETTER PRESENTATION OF TIMERS

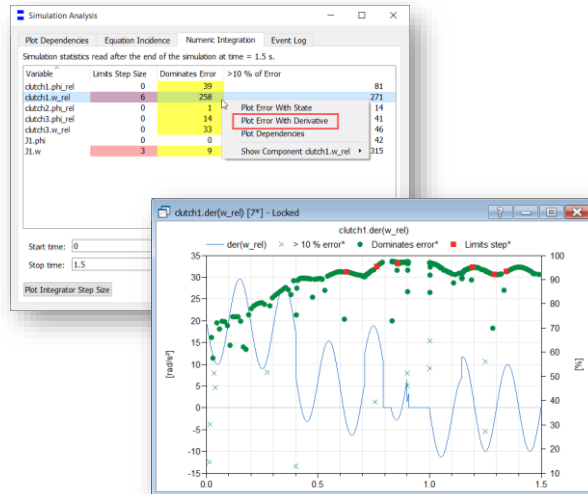
New group **Timers** is available in Simulation Setup dialog

- The timer values are presented in the Simulation Analysis dialog, in the new tab Timers
- The tab has two subtabs
 - Block timers
 - Function and FMU timers
- The results of timers will be printed to the file `timers.txt`
 - User need to set flag `Advanced.Debug.WriteTimerResultsToFile = true`
- The timer values are automatically read from the file `timers.txt` at the end of the simulation



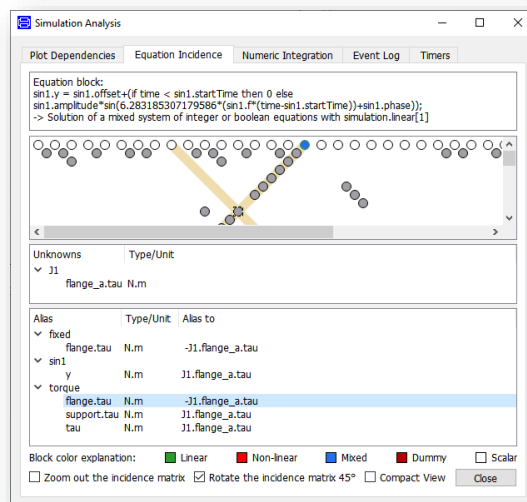
ERROR STATE DERIVATIVE FOR SIMULATION ANALYSIS

- For numeric integration in Simulation Analysis
- User can now plot error with the state derivative instead of the state itself



PRESENTATION OF ALIAS VARIABLES

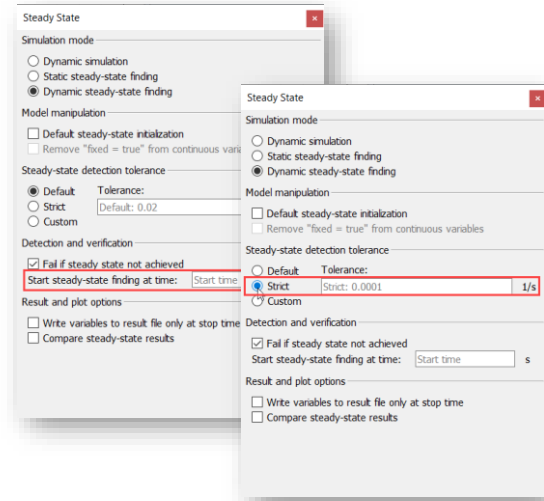
- Improved presentation of alias variables
- Set how aliases are presented in messages
Advanced.Translation.KeepAliasInMessages
- Equation incidence show aliases in a new table



STEADY STATE SOLVER INTERFACE

Specify start time for dynamic steady-state finding

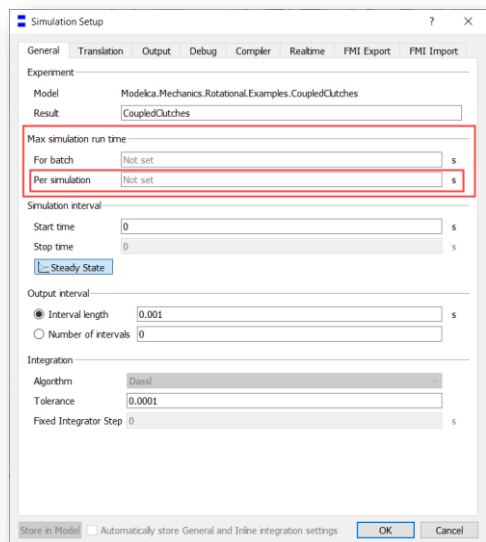
- Possible to set a start time for the dynamic steady-state finding
- Useful when an event triggers dynamic behavior at a time later than the start time of the simulation
- Strict steady-state detection tolerance for dynamic steady-state finding



9

MAX RUN TIME PER SIMULATION

- Specify max time per
 - Each simulation
 - Total time for batch simulation
- Each simulation starts its own timer and stops itself if this timer runs out
- Useful if a few of the simulations in a sweep takes very long time and eventually fails

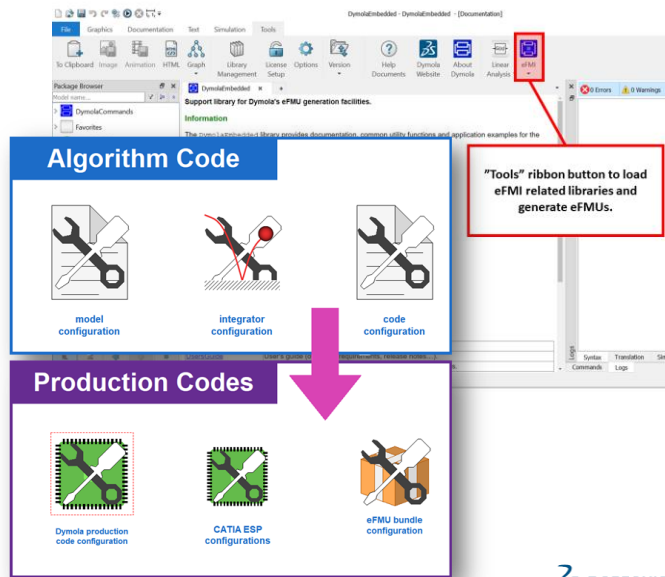


10

EFMI SUPPORT

FMI for embedded systems

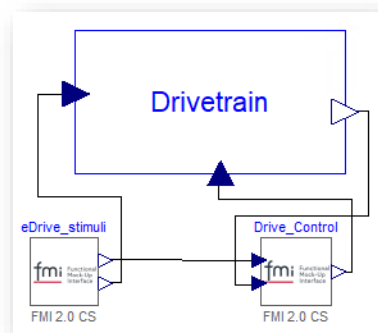
- eFMI facilities comprise
 - Generate eFMUs with algorithm code
 - Production and binary code containers
 - Use generated eFMUs for co-simulation from within Modelica models
- The **eFMI** button in **Tools** ribbon is used to load Dymola's eFMI facilities
- To generate eFMU, a Dymola Source Code Generation License is required



SSP EXPORT

ssp System Structure & Parameterization

- Export Modelica models according to the System Structure and Parametrization (SSP) file format
 - www.ssp-standard.org
- Dymola performs the following steps when exporting to SSP:
 - The top-level model structure is stored as a System Structure Description (SSD).
 - Any FMU is copied to the resources directory of the SSP.
 - Otherwise, assume Modelica model. The full path of the component's model is stored in the SSD. The model itself is not stored in the SSP file.
- Model documentation, user metadata, parameter types, and component modifiers are stored in the SSD



DYMOLA LICENSE SERVER ON WINDOWS AND LINUX

Upgrade of FLEXnet Publisher version

- FLEXnet Publisher in Dymola 2023 is upgraded to version 11.16.2.1
 - License server used for Dymola must be upgraded to a version number $\geq 11.16.2.1$
 - Enables running license server on Windows Server 2019
 - License server 11.16.2.1 works with previous Dymola versions as well
- The 32-bit license server on Windows is replaced by a 64-bit license server
 - Consistent with Linux, where newer versions will only be 64-bit
- The web-based license server front-end lmadm removed (on Windows and Linux)

© Dassault Systèmes | Confidential Information | 23/07/2021 | ref.: 3DS_Document_2021



© Dassault Systèmes | Confidential Information | ref.: 3DS_Document_2021